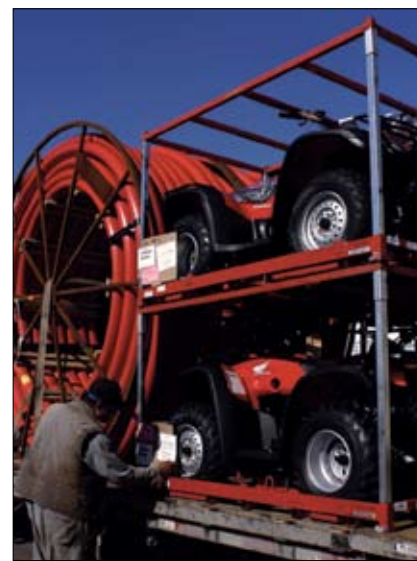
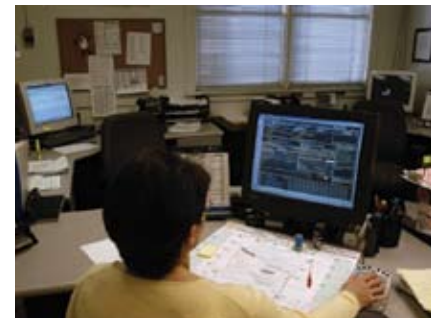
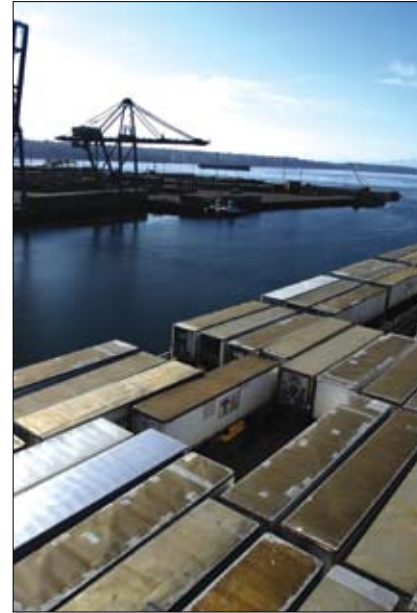


The one company to call for a variety of shipping solutions.

When you need to move containerized cargo by sea between the continental United States and Puerto Rico, the U.S. Virgin Islands, Hawaii, Guam, or Alaska, one company can handle all of the details for you: American Fast Freight. Our family of companies provides a comprehensive range of services that ensures you of reliable, cost-effective shipping.



Why American Fast Freight?

Companies have been relying on us to ship cargo between the mainland U.S. and Hawaii, Alaska, and Puerto Rico for more than 20 years. Here are just some of the reasons:

- Steamship and barge services
- Inland truck and rail service
- Single point of contact
- Single invoice
- Through bills of lading
- LCL and FCL service
- Oversize and special equipment capabilities
- National dispatch service
- Local knowledge in each market
- Air freight service available
- Internet tracking and tracing
- Specialized Logistics Division
- Households Goods Moving Division



American Fast Freight, Inc.
www.americanfast.com

Your single source for any kind of domestic ocean freight forwarding.



We'll get it there, over road, over rail, over water.



Our receiving and loading terminals in Seattle, Tacoma, Oakland, Los Angeles, and Chicago expedite your shipments to and from Alaska.

As a pioneer in solving transportation problems, we have developed sophisticated distribution systems using all modes of transportation to and within Alaska.

Using climate-controlled trailers, straight trucks, tractor-trailers, flatbeds, and people who know how to handle the unique challenges presented by Alaska, we are prepared to deal with any situation that develops.



Through a network of contract trucking, intermodal rail, and air freight forwarding partners, we provide seamless transportation from start to finish.

Fast, efficient deliveries

Alaska's main population areas—Anchorage, Fairbanks, and Kenai—are linked by both highway and the Alaska Railroad, defining an area called the Rail Belt. Having our own terminals and people in each of these cities allows us to provide timely deliveries throughout the major population centers.

Most cargo headed for Alaska arrives on steamships through the Port of Anchorage. Each of the lines serving Alaska has two weekly departures from the Seattle-Tacoma area, with transit times of three days. Barges serve other areas of Alaska, with transit times of 10 to 21 days.

Through our terminals in Seattle, Tacoma, Oakland, Los Angeles, and Chicago and affiliates in Newark, Jacksonville, and Miami, we can provide truck and rail connections to coincide with Seattle-Tacoma vessel departures.

Complete service to Southeast Alaska

Juneau, Ketchikan, and a number of other areas in Southeast Alaska are served only by barge, ferry, or air. We'll consolidate your shipments in our terminals and coordinate all the details to make sure they get to these communities quickly and safely.

We'll also make all of the necessary arrangements for areas that are only served by air, making sure your freight arrives on time and intact.

Additional services

As a full-service company with roots in Alaska, we can take care of a variety of your other needs through our subsidiary companies.

- **AFF Distribution Services** in Anchorage provides short- and long-term warehousing and third-party distribution, inventory reports, order processing, and delivery of your product throughout the rail belt.
- **American Relocation Services**, with offices in Anchorage and Fairbanks, offers moving and storage of household goods.
- **Alaska Archives** provides safe storage for digital and paper files.



- **AFF Logistics** in Tacoma offers both third-party freight brokerage services and heavy-lift, over size cargo transport services. They are also the project freight arm of American Fast Freight.

Think of us as the Island experts.

Our Hawaiian subsidiary, AFF Hawaiian Ocean Transport (HOT), has been serving the Hawaiian Islands and Guam for more than 20 years. Through HOT, we offer both LCL and FCL service from all West Coast ports to Honolulu. Service to the outer islands is provided by barge—of course, we'll make all of the arrangements for you.



There are two weekly steamship departures from Los Angeles and Oakland and one from the port of Seattle. Transit times are four days from the California ports and seven days from Seattle.

Complete national coverage

We have the extensive coverage and experience to arrange for all inland connections by truck or rail to get your cargo to the port of departure.

And we have terminals in Los Angeles, Oakland, Chicago, and Seattle, as well as affiliated offices and terminals in Newark, Jacksonville, and Miami.

Assembly and distribution services simplify your life

Our assembly and distribution services can make your shipping run a lot smoother—with no additional effort from you. We can pick up multiple orders at one location, move them as a single shipment, and then make separate deliveries throughout the islands.

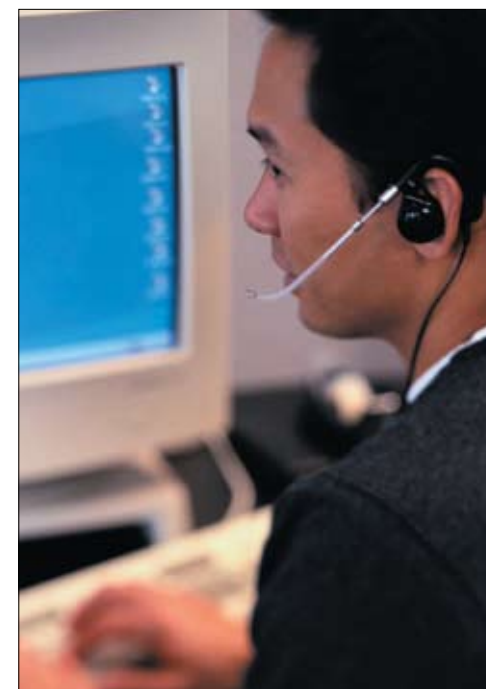
Or we can arrange to receive multiple orders from numerous suppliers and move them on a pre-arranged schedule as a single shipment to the consignee.

At your service

As part of our complete service, we'll provide you with advance sailing information, a single invoice, and a through bill of lading to the cargo's destination.

We can guarantee you the highest quality service, flexible programs, and competitive pricing on surface transportation for one simple reason: it's what we do.

So the next time you need help getting product to Hawaii or Guam, do what a variety of local companies do: call the logistics experts at American Fast Freight.



Our experienced staff ensures you of efficient, personal service from start to finish.



We offer both LCL and FCL service from all West Coast ports to Honolulu, as well as barge service to the outer islands.

We can help you negotiate unfamiliar territory.



We're experts in shipping to Puerto Rico. After all, we've been doing it for more than 30 years.

Shipping to Puerto Rico is much different from shipping to Alaska or Hawaii for a number of reasons. The first one relates to language. Although English is regarded as the language of business, Spanish is the official language. Also, shipments entering Puerto Rico for resale are subject to inspection and payment of excise taxes through an agency called Arbitrios. Finally, shippers are required to file a Shipper's Export Declaration.

The need for qualified and experienced personnel is paramount in Puerto Rico. Our subsidiary, Transconex, Inc., maintains an exclusive agency agreement with Transconex de Puerto Rico, Inc. Their staff is completely bilingual and has direct computer and communication access to all American Fast Freight offices.

Documentation experts

In addition to a bill of lading, you need to provide two supporting documents

for all shipments destined for Puerto Rico: a Commercial Invoice and a Shipper's Export Declaration (if the value of a single shipment is greater than USD \$2,500). The commercial invoice is required for clearing cargo delivery for excise tax purposes. Most products entering Puerto Rico are subject to this tax, which is normally 6.6% of the commercial invoice value.

A Shipper Export Declaration (SED) must be filed electronically through AES Direct. The filing can be made either by the shipper/exporter or you can provide Transconex with a Power of Attorney authorizing us to file on your behalf. Transconex personnel are certified to file with AES Direct and have been doing so since the inception of the electronic filing system.

Our documentation specialists are extremely well versed in this area. As a result, they can help you expedite this entire process. We can even set up a tax prepayment service for you.

Complete capabilities in Puerto Rico and in the U.S.

Our capabilities include a 65,000 square-foot tax-bonded Container Freight Station in San Juan, as well as receiving terminals in Seattle-Tacoma, Oakland, Los Angeles, Houston, Chicago, New York, Jacksonville, and Miami.

This network of hubs enables us to provide you with cost-effective door-to-door service from any city in the continental U.S. to cities throughout Puerto Rico.

U.S. Virgin Islands service

We handle both full container load (FCL) and less than container load (LCL) shipments. In most cases, LCL shipments will be transferred over Puerto Rico to either St. Thomas or St. Croix. FCL shipments can move directly from East Coast ports. There is also FCL service from Puerto Rico. Although there are no excise taxes for shipments destined to these islands, all shipments are subject to U.S. Customs inspections.

The flexibility you demand

Most cargo going to Puerto Rico departs from the East Coast ports of Philadelphia; Elizabeth, New Jersey; and Jacksonville or Miami, Florida. Through the Transconex network, we also offer you service from the ports of Los Angeles, Houston, and Chicago.

Weekly LCL cargo is consolidated in our Southern California container freight station and travels to Jacksonville in two-man team over-the-road trailers timed to be loaded for the Thursday and Friday vessel departures to Puerto Rico. A full range of intermodal service is available on FCL cargo from virtually any city in the continental United States.